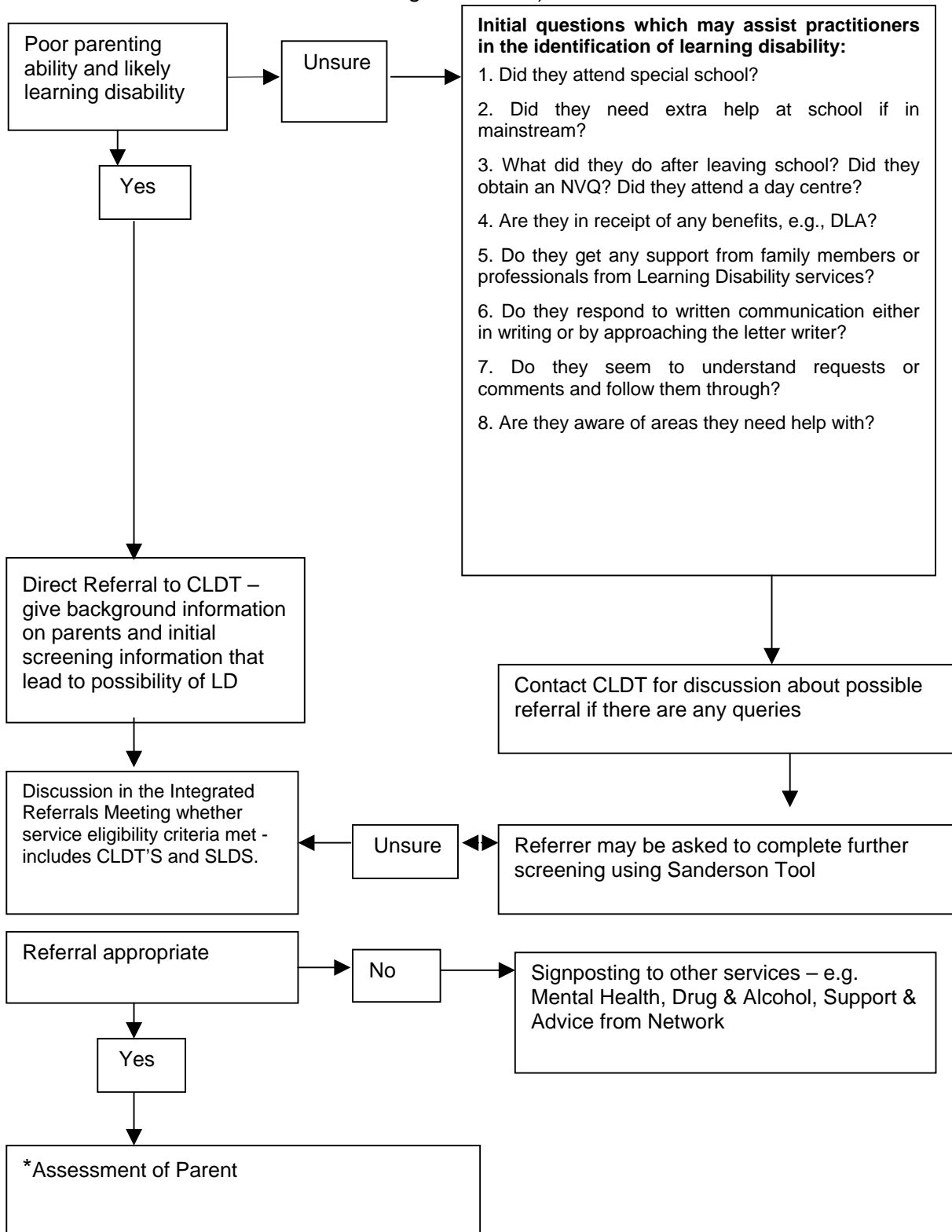


Flowchart 1: Referral to Community Learning Disability Team and Specialist Learning Disability Services (reproduced from Protocol for the Assessment of Parents with Learning Disabilities)



**Children Schools and Families will always retain responsibility for completion of the Initial and Core Assessments. When a child is at risk of suffering significant harm, however when an appropriate request for support/ specialist assessment is made, other agencies need to be mindful of the timescales, and referrals given high priority in line with the Child Protection Procedures.*